

[Click Here to Install Silverlight](#)United States [Change](#) | [All Microsoft Sites](#)**Microsoft** TechNet

Search Microsoft.com for:

Go

Microsoft Windows Server 2003 TechCenter

Windows Server
TechCenter

Technical Library ▶

Downloads

Events & Errors

Script Center

Virtual Lab

Webcasts

International TechCenters

Windows Server R2
Release Candidate**Additional Resources**[TechNet Home](#)[Product Support](#)[Community](#)[MSDN Developer Center](#)[Windows 2000 Server](#)[Windows Server System](#)[TechNet Home](#) > [Windows Server TechCenter](#) > [Identity and Directory Services](#) > [Active Directory](#) > [Step By Step](#)

Step-by-Step Guide to a Common Infrastructure for Windows Server 2003 Deployment

Part 2: Installing a Windows XP Professional Workstation and Connecting It to a Domain

Published: September 17, 2004

This document is the second in a series of step by step guides explaining how to build a common network infrastructure for deployment of the Microsoft Windows Server 2003 operating system. Subsequent guides build upon this base infrastructure by detailing the configuration of common customer use scenarios.

This document describes how to install the Microsoft Windows XP Professional operating system on a workstation and connect that workstation to the domain controller server that was created in [Part 1: Installing Windows Server 2003 as a Domain Controller](#). Following the steps in these two guides will create a common infrastructure with which to evaluate the Windows Server 2003 operating system.

On This Page[↓ Introduction](#)[↓ Overview](#)[↓ Installing and Configuring Windows XP Professional](#)[↓ Additional Resources](#)**Introduction****Step-by-Step Guides**

The Microsoft Windows Server 2003 Deployment step-by-step guides provide hands-on experience for many common operating system configurations. The guides begin by establishing a common network infrastructure through the installation of Windows Server 2003, the configuration of Active Directory®, the installation of a Windows XP Professional workstation, and finally the addition of this workstation to a domain. Subsequent step-by-step guides assume that you have this common network infrastructure in place. If you do not wish to follow this common network infrastructure, you will need to make appropriate modifications while using these guides.

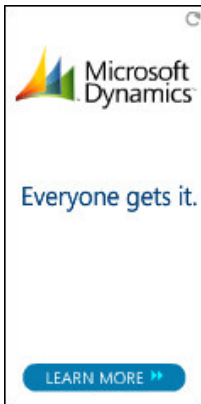
The common network infrastructure requires the completion of the following guides.

- [Part I: Installing Windows Server 2003 as a Domain Controller](#)
- **Part II: Installing a Windows XP Professional Workstation and Connecting It to a Domain**

Once the common network infrastructure is configured, any of the additional step-by-step guides may be employed. Note that some step-by-step guides may have additional prerequisites above and beyond the common network infrastructure requirements. Any additional requirements will be noted in the specific step-by-step guide.

Microsoft Virtual PC

The Windows Server 2003 Deployment step-by-step guides may be implemented within a physical lab environment or through virtualization technologies like Microsoft



Virtual PC 2004 or Microsoft Virtual Server 2005. Virtual machine technology enables customers to run multiple operating systems concurrently on a single physical server. Virtual PC 2004 and Virtual Server 2005 are designed to increase operational efficiency in software testing and development, legacy application migration, and server consolidation scenarios.

The Windows Server 2003 Deployment step-by-step guides assume that all configurations will occur within a physical lab environment, although most configurations can be applied to a virtual environment without modification.

Applying the concepts provided in these step-by-step guides to a virtual environment is beyond the scope of this document.

Important Notes

The example companies, organizations, products, domain names, e-mail addresses, logos, people, places, and events depicted herein are fictitious. No association with any real company, organization, product, domain name, e-mail address, logo, person, places, or events is intended or should be inferred.

This common infrastructure is designed for use on a private network. The fictitious company name and Domain Name System (DNS) name used in the common infrastructure are not registered for use on the Internet. You should not use this name on a public network or Internet.

The Active Directory service structure for this common infrastructure is designed to show how Windows Server 2003 Change and Configuration Management works and functions with Active Directory. It was not designed as a model for configuring Active Directory for any organization.

[↑ Top of page](#)

Overview

This document is the second in a two-part series. It describes how to install the Windows XP Professional operating system on a workstation and to connect that workstation to the domain controller server created in [Part 1: Installing Windows Server 2003 as a Domain Controller](#).

Prerequisites

- [Part 1: Installing Windows Server 2003 as a Domain Controller](#)

Guide Requirements

You will need one machine capable of running Windows XP Professional. The machine must be equipped with a network adapter. Review the [Windows XP Professional System Requirements](#) to ensure that your workstation meets the minimum system requirements for Windows XP Professional.

Use the following naming conventions to configure each workstation.

Parameter	Value
Computer Name(s)	HQ-CON-WRK-01 HQ-CON-WRK-nn
Network Settings: IP Address	DHCP

Complete the following instructions to install Windows XP Professional on a workstation. For additional help, see [Windows XP Professional Online Help](#).

[↑ Top of page](#)

Installing and Configuring Windows XP Professional

This guide assumes you are installing Windows XP Professional on a machine with no pre-existing version of Windows. If you are upgrading from a previous version of

Windows, some of the steps that follow may differ. For additional guidance, see the Getting Started instructions you received with your copy of Windows XP Professional.

Be sure that your computer is set up to boot from the CD-ROM drive. To verify or change the boot sequence, run the CMOS Setup program native to your machine.

1. Insert the **Windows XP Professional CD** into the CD-ROM drive and reboot your machine.
2. When the **Welcome to Setup** screen appears, press **Enter**.
3. Review the **Licensing Agreement**, and if you find it acceptable, press **F8**.
4. Follow the instructions to delete all existing disk partitions. The exact steps will differ based on the number and type of partitions already on the computer. Continue to delete partitions until all disk space is labeled as **Unpartitioned space**.
5. When all disk space is labeled as **Unpartitioned space**, press **C** to create a partition in the unpartitioned space on the first disk drive (as applicable).
6. After the **New (Unformatted)** partition is created, press **Enter**.
7. Select **Format the partition using the NTFS file system <Quick>**, and then press **Enter**.
8. In the **Regional and Language Options** dialog box, make changes required for your locale (typically, none are required for the United States), and then click **Next**.
9. On the **Personalize Your Software** screen, type **Christine Koch** in the **Name** box. In the **Organization** box, type **Contoso**, and then click **Next** to continue.
10. Enter the **Product Key** (located on the back of your Windows XP Professional CD case) in the text boxes provided. Click **Next** to continue.
11. On the **Computer Name and Administrator Password** screen, enter the **Computer name** as **HQ-CON-WRK-01**. If this is not the first workstation you have added to the domain, use the naming conventions detailed at the beginning of this document.
12. Leave the **Administrator password** blank, and then click **Next**.
Best Practice: To facilitate the step-by-step guides, the Administrator password is intentionally left blank—that is, there is no password. This is not an acceptable security practice. When installing a workstation in a production environment, a password should always be set.
13. Adjust the **Date and Time Settings** as necessary, and then click **Next**. Setup installs the networking components; this may take a few minutes.
14. On the **Network Settings** screen, click **Next** to accept the **Typical settings**. This will configure the workstation to request a Dynamic Host Configuration Protocol (DHCP) assigned Internet Protocol (IP) address from an appropriate server.
15. On the **Workgroup or Computer Domain** screen, select **No, this computer is not on a network** (default), and then click **OK**. This workstation will be connected to the domain in the next section.
16. After Setup has completed, click **Finish** to reboot the computer.
17. After the system restarts, Windows steps through several self-explanatory configuration screens. When prompted, use **Christine**, from the common infrastructure, as the first defined user.

Adding the Workstation to the Domain

1. Click the **Start** button, click **Control Panel**, and then double-click the **System** icon.

2. Click the **Computer Name** tab, and then click **Change**.
3. Verify that the **Computer name** is **HQ-CON-WRK-01**, and then click the **Domain** radio button as shown in Figure 1.

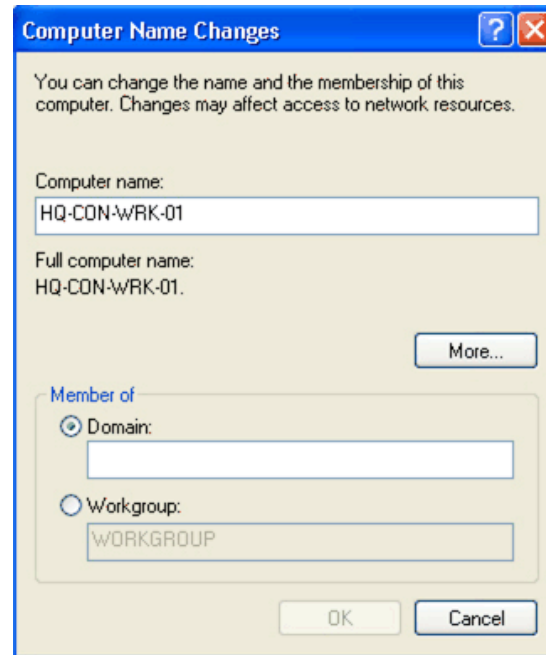


Figure 1. Change Computer Membership to a Domain

4. Under **Member of**, type **contoso** for the **Domain**, and then click **OK**.
5. The **Domain Username and Password** dialog box appears. You must supply an account that has privileges to join the domain. In the **Name** box, type **administrator@contoso.com** and click **OK**. (No password is required for this step-by-step guide.)
6. When you receive the message **Welcome to the contoso domain**, the workstation has successfully joined the domain. Click **OK**.
7. Click **OK** to reboot the computer, and then click **OK** to close the **System Properties** window.
8. When the **System Settings Change** dialog box appears, click **Yes** to restart the workstation.

Viewing Computers in Your Network

1. After the workstation has restarted, press **Ctrl+Alt+Delete** and log on as **christine@contoso.com** with a password of **pass#word1**. When prompted, click **OK** to change Christine's password. Type **pass#word2** for **New Password** and **Confirm New Password**. Click **OK** to continue, and then click **OK** again to confirm the password change.

2. Click the **Start** button, and then click **My Computer**.
3. Double-click **My Network Places**. Double-click the **Entire Network** link. Double-click the **Microsoft Windows Network** icon.
4. Double-click the **Contoso** icon to view the computers in this network as shown in Figure 2.

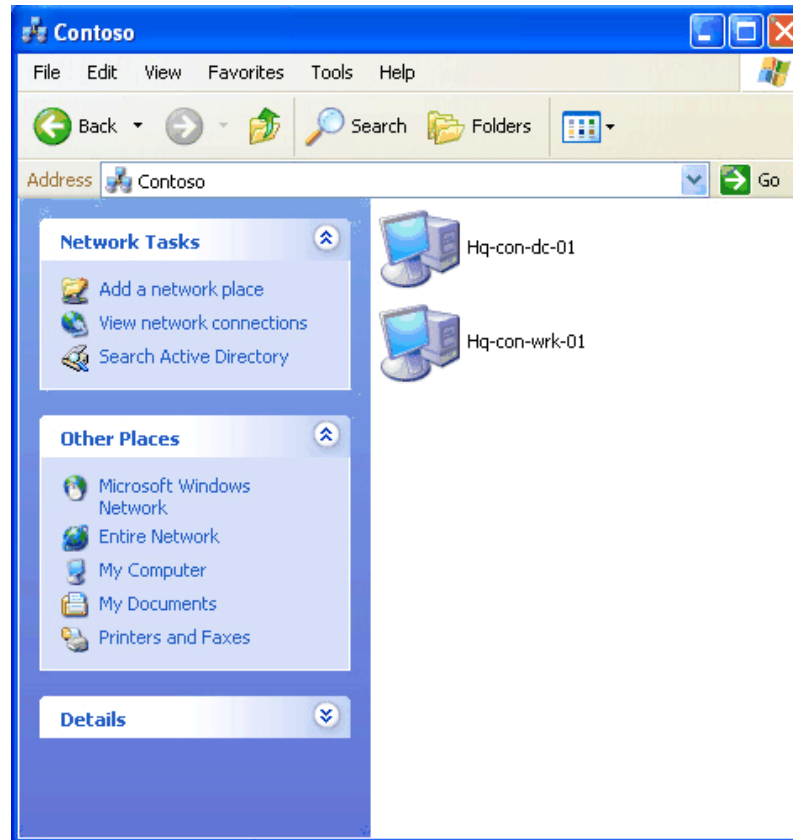


Figure 2. View the Computers in the Contoso Domain

5. Close the **Contoso** window.

[↑ Top of page](#)




Additional Resources

For more information, see the following resources.

Microsoft Windows XP Professional at

- <http://www.microsoft.com/windowsxp/default.msp>
- For the latest information about Windows Server 2003, see the Windows Server 2003 Web site at <http://www.microsoft.com/windowsserver2003>

[↑ Top of page](#)

 Printer Friendly Version  Send This Content  Add To Favorites

How would you rate the usefulness of this content ?

1 2 3 4 5
Poor Outstanding

Tell us why you rated the content this way. (optional)

Submit

[Manage Your Profile](#)

© 2008 Microsoft Corporation. All rights reserved. [Contact Us](#) | [Terms of Use](#) | [Trademarks](#) | [Privacy Statement](#)

Microsoft